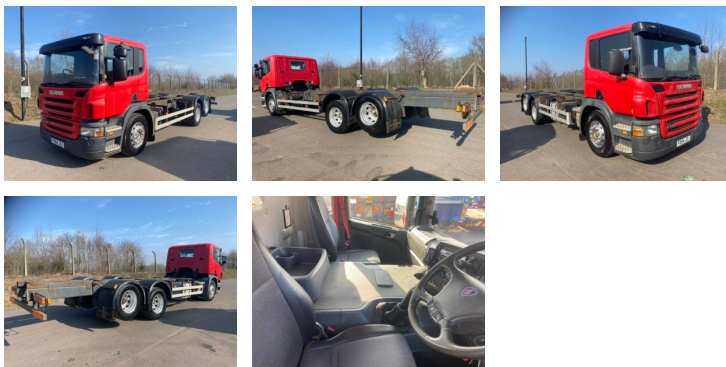


2004 SCANIA P310 26 TONNE SCANIA RIGID



Overview

Manufacturer **Scania**

Model **P10**

Engine **310**

Axles **6x2**

Cabin

Body Type **Rigid**

Gearbox **Manual**

Registration

Year **2004**

Further Information

2004 Scania P310 day cab manual gearbox 26 tonne chassis cab with double rear lift 10 tyre and only 580,000kms excellent condition all the way around



TS Commercials Exports Limited

62 The Green, Donington-Le-Heath, Coalville, Leicester. LE67 2GE

Telephone: **+44 (0)1530 457997**

Mobile: **+44 (0)7854 814146**

Email: sales@tscommercials.co.uk