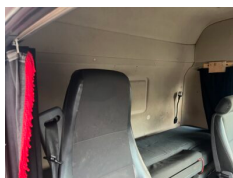
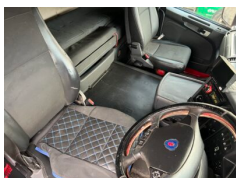


2010 SCANIA G280 26 TONNE CURTAINSIDER SCAIA RIGID



Overview

Manufacturer	Scania
Model	G280
Engine	280
Axles	6x2
Cabin	
Body Type	Rigid
Gearbox	Semi Automatic
Registration	
Year	2010

Further Information

2010 Scania G280 Euro 5 sleeper cab semi auto with clutch pedal 26 tonne curtainsider with twin tag axle and moffet mounts. 950,000kms



TS Commercials Exports Limited

62 The Green, Donington-Le-Heath, Coalville, Leicester. LE67 2GE

Telephone: **+44 (0)1530 457997**

Mobile: **+44 (0)7854 814146**

Email: sales@tscommercials.co.uk